



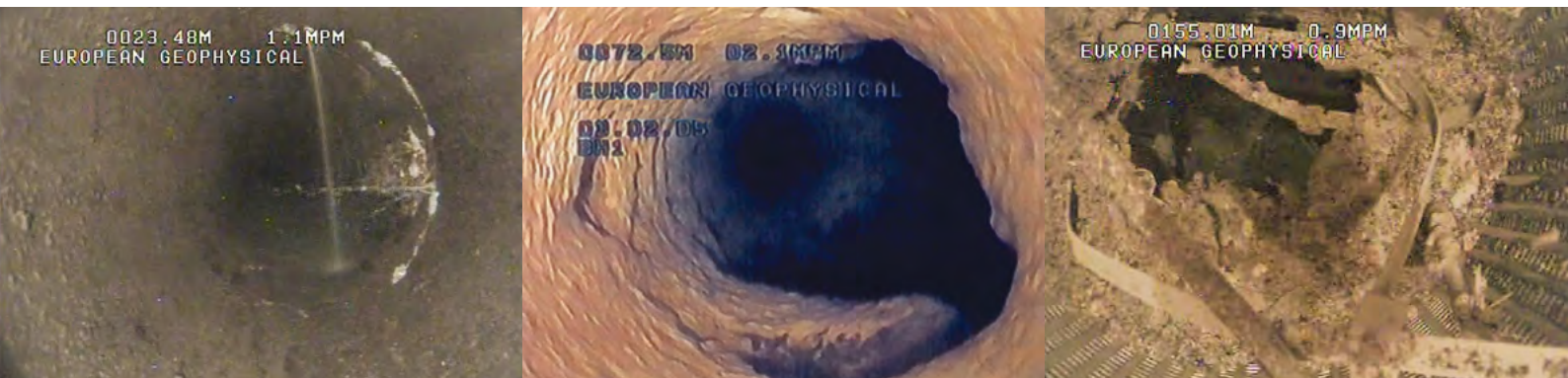
## BOREHOLE CONDITION ASSESSMENT

The condition of a borehole is paramount to its on going performance. Checks on newly drilled boreholes ensure that design and specification have been met and allow benchmark readings for monitoring future hydro-geological changes.

Checks to existing boreholes should be made part of an ongoing maintenance programme, thus highlighting any potential problems before they develop into major problems or disruptions

in supply. Prior to the decision to rehabilitate a borehole, various methods can provide vital information so that the most suitable and economical decisions can be made.

European Geophysical Services assessment service utilises a combination of down-hole video cameras and various geophysical techniques to provide a cost effective solution to borehole evaluation.

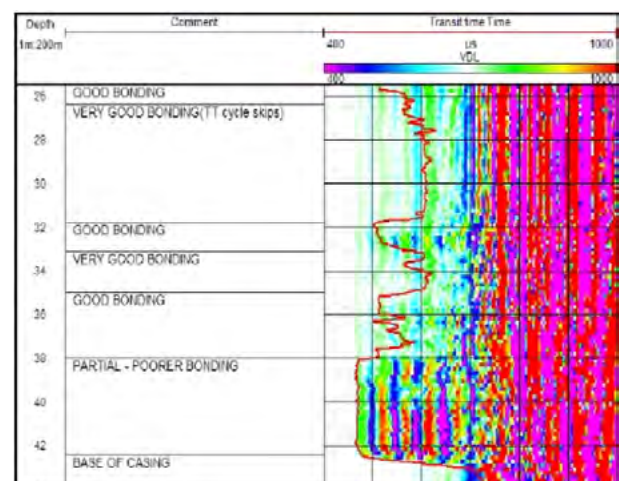


### Existing Boreholes

- Locates and identify causes of obstructions.
- Determines the condition of casings.
- Identification of corrosion and bio-fouling.
- Evaluation of cement grouts.
- Location of voiding behind linings.
- Measurement water quality.
- Locates running sand.

### New Boreholes

- Verifies correct type, size and positions of casings and screens.
- Checks the integrity of casings, grout seals & borehole stability.
- Provides benchmark data for monitoring changes.



Example Cement Bond Log