

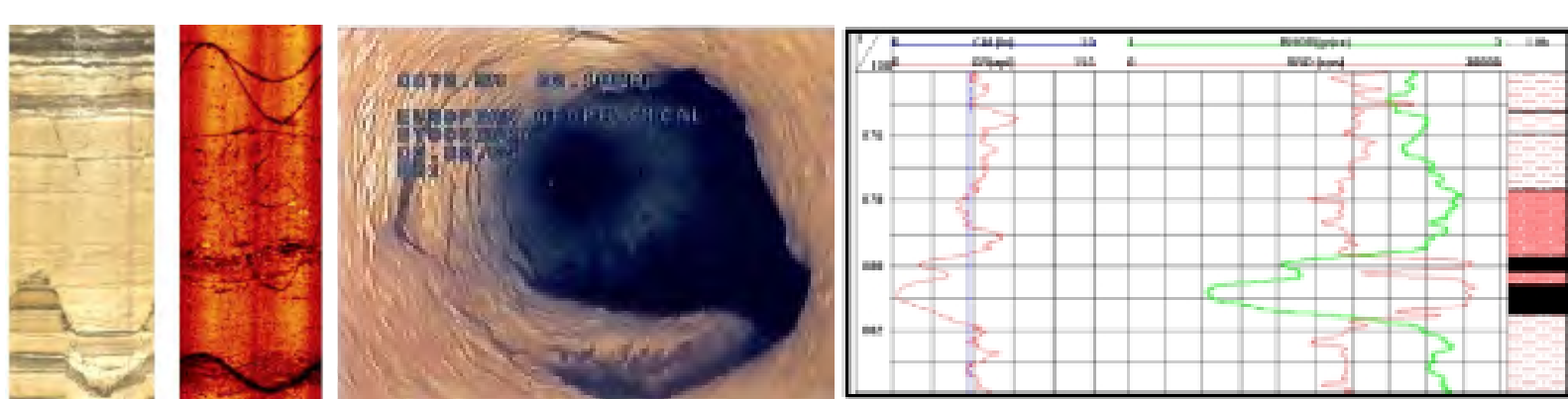


## BOREHOLE GEOPHYSICAL LOGGING

### Geophysical logging

Geophysical logs are obtained from electronic probes lowered into a borehole. They provide an independent and continuous in-situ profile of the various visual, physical and chemical properties of the construction and fluid within a borehole and its surrounding geology.

- Environmental and geotechnical investigations
- Evaluation and monitoring of groundwater systems
- Mineral exploration and mining
- Geological studies
- Hydro-geological investigations
- Borehole inspection, rehabilitation investigations
- New borehole construction - design, development and verification

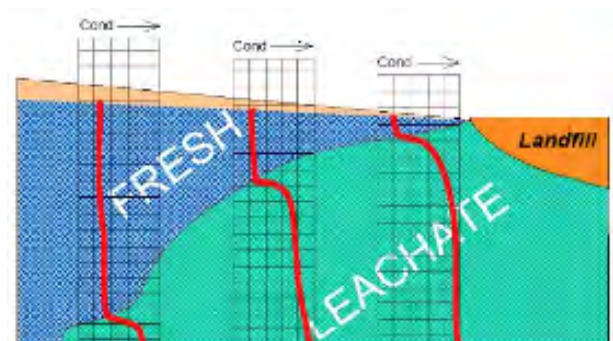


### CCTV Surveys

Colour video surveys using a wide range of CCTV systems to suit various conditions including:

- Water wells / boreholes
- Large diameter water wells
- Water filled adits and tunnels
- Mine shafts

The expertise and accumulated experience of European Geophysical Services Ltd's core team of geoscientists and engineers ensures an accurate, high quality data acquisition and reporting service for our clients. Projects have been completed on behalf of a large number of private and public sector companies. Our reputation is based on a thorough understanding of a client's requirements and a technically excellent final product.



Monitoring of groundwater around a landfill site using fluid conductivity logging