



## DUAL SPACED FOCUSED RESISTIVITY TOOL

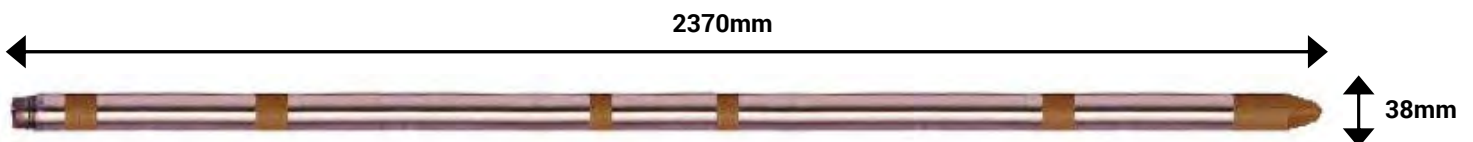
This tool measures the resistivity of the material surrounding the borehole.

The Focused Resistivity tool provides resistivity logs with finer vertical resolution and a deeper depth of investigation than a Normal Resistivity tool.

Performance is also improved in higher conductivity mud, saline water and higher resistivity formations.

The response of this log is a function of porosity, mineralogy and pore water quality.

In metal lined boreholes the resistivity can give qualitative information on the condition of the casing and may be used to identify areas of increased corrosion or encrustation.



### Specifications

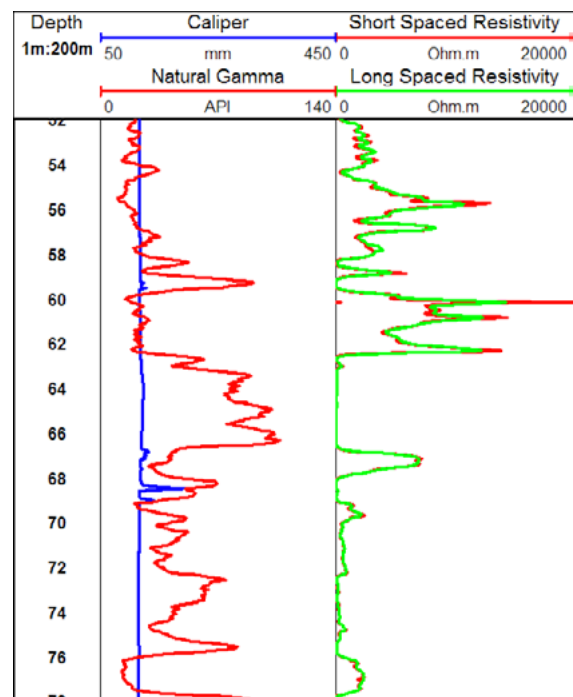
Size: 2370x 38mm  
Weight: 7.0kg  
Range: 1 to 10,000 Ohm.m  
Max. temperature: 80°C  
Max. pressure: 20MPa

### Logging Conditions

4 - 9 m / min  
Free running

### Borehole Conditions

Minimum diameter 50mm  
Fluid filled  
Unlined



Example focused resistivity log showing increased resolution over a normal resistivity tool