

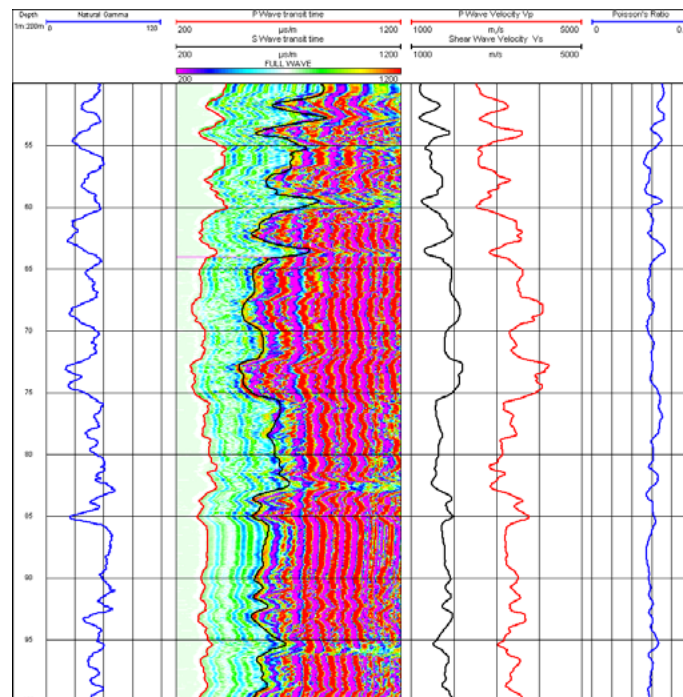


## FULL WAVE SONIC TOOL (FWS)

This tool has been specially designed to provide a full wave-form recording of sonic signals and uses fixed spaced transmitter - receivers. The received signals are digitised at fast sampling rate resulting in high resolution data. The data may be processed for P wave velocity (or transit time) and amplitude. Estimates of S wave velocity maybe obtained under suitable formation and borehole conditions.

The P wave velocity log may be used for identifying variations in hardness and porosity.

**This log can only be achieved in fluid filled unlined boreholes.**



### Specifications

Size: 1.9m x 60mm  
Weight: 22kg  
Sampling rate: Variable (500 samples at 4ms or slower)  
Resolution: 16bit; Record length: min 2ms  
Frequency: 23 kHz  
Gain settings: 16 levels

### Borehole Conditions

Diameter 75 to 300mm

### Water filled

Unlined

### Logging Conditions

2 - 9 m / min  
Free running