

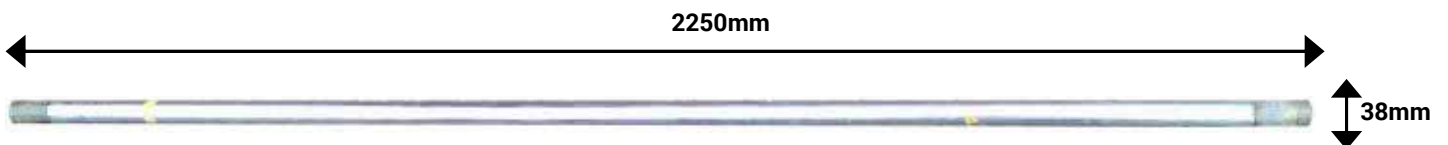


## GAMMA-GAMMA (DUAL DENSITY) TOOL

This density tool has two detectors at different spacings from a source of gamma radiation. The logs from each detector indicate the apparent density of the material surrounding the tool at a radius of investigation related to the spacing.

The Long Spaced Density detector (LSD) has a spacing of 48cm and the greatest depth of investigation.

The High Resolution Density detector (HRD) has a spacing of 24cm, this detector gives the greatest resolution but is more affected by borehole features such as linings and mud-cake.



### Specifications

Size: 2250 x 38mm  
Weight: 12kg  
Max. temperature: 80°C

### Logging Conditions

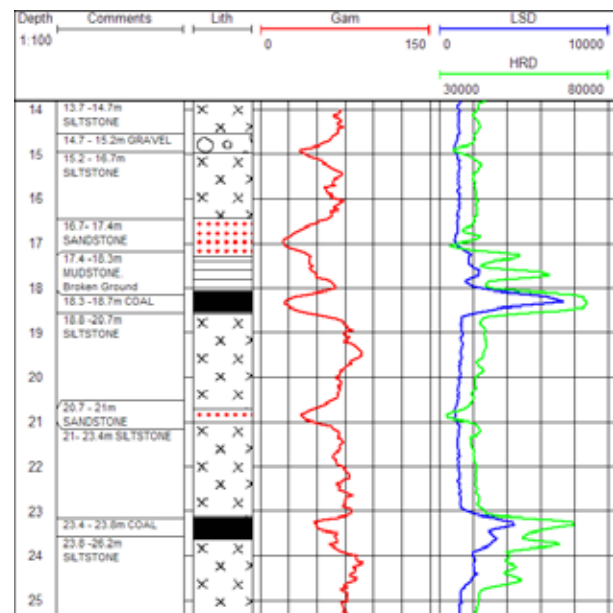
2 - 5 m / min  
Free running

### Borehole Conditions 50 - 300mm\*

Fluid filled or dry  
Unlined or lined\*\*

\*For boreholes larger than 300mm this tool may be run side-walled with multiple runs around different sides of the borehole.

\*\*In lined or cased sections of boreholes these logs give qualitative information on the density of the borehole.



Example formation investigation using dual density and natural gamma Logs through cased boreholes into old coal workings.