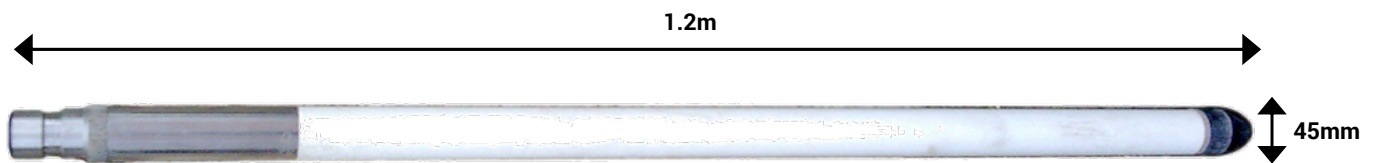




## MAGNETIC SUSCEPTIBILITY TOOL

This is a two or three coil sonde designed to measure apparent formation magnetic susceptibility. The three coils system sonde allows for measurements in a wide range of formations. The dual spacing allows borehole and formation fluid properties to be investigated.



### Specifications

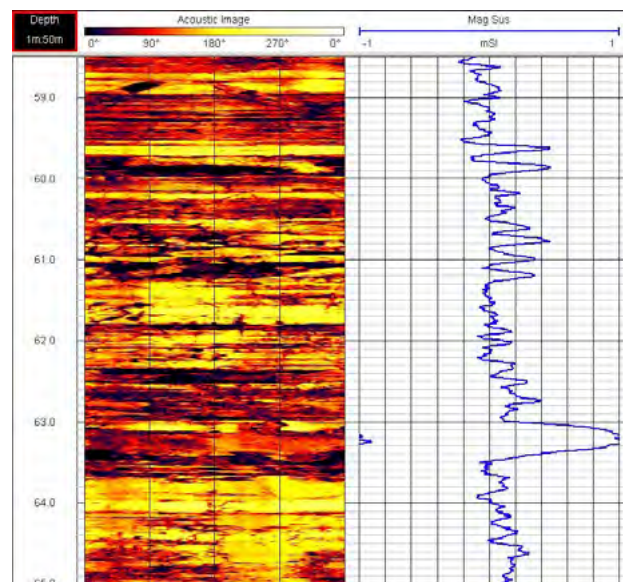
Size:	1.2m x 45mm
Weight:	5kg
Apparent Susceptibility Range:	$10^{-5}$ - 0.5 S.I. Units
Resolution:	1 Count
Transmitter Coil Frequency	2kHz

### Borehole Conditions

Minimum diameter 50mm  
Dry or fluid filled  
Unlined, or plastic lined

### Logging Conditions

2 - 4 m/min  
Free running



Formation evaluation using Acoustic Imager and Magnetic Susceptibility