

# Geophysical Logging & CCTV Surveys for the Water Industry

## Capability Statement

### Overview

European Geophysical Services Ltd is a leading borehole geophysical logging company, providing a large range of measurements and services to the water, environmental, mining and geotechnical industries. This position is based on an excellent and reliable field service, coupled with over 28 years of geophysical interpretation experience, efficient data processing and high quality reporting.

### Qualifications and Training

European Geophysical Services employs a multi-disciplinary team of BSc, MSc and PhD qualified geophysicists and geologists. These highly experienced engineers are able to provide a service customised to the clients requirements. All our staff have the following qualifications and training:

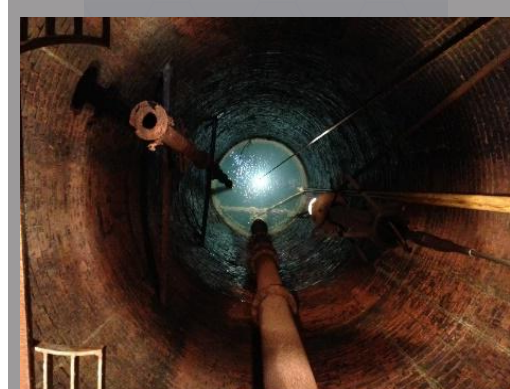
- ▶ BSc in Geology, Geophysics
- ▶ EUSR water hygiene
- ▶ Confined Space
- ▶ Manual Handling
- ▶ REC First Aid
- ▶ On Road and Off Road Driver Training
- ▶ Radiological Protection Supervisor

### Current Clients

We have worked with most of the water utility companies in the country, along with a large number of water consultancies and mineral water companies.

We currently have contracts with, or are the preferred contractor for:

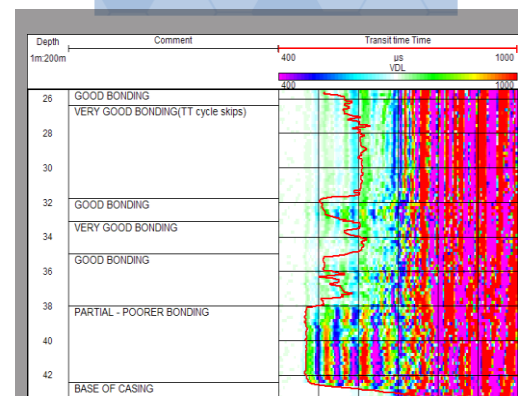
- ▶ Severn Trent Water (since 1994)
- ▶ United Utilities (since 1994)
- ▶ Yorkshire Water (since 1994)
- ▶ South Staffordshire Water (since 1994)
- ▶ Northumberland Water (since 1998)
- ▶ Essex and Suffolk Water (since 1994)
- ▶ South East Water (since 1994 as Mid Kent Water)
- ▶ Southern Water (since 2002)
- ▶ Thames Water (since 1994)
- ▶ Anglian Water (since 2004)
- ▶ South West Water (since 2009)
- ▶ Nestle (since 2002)
- ▶ Mining Remediation Authority (CA) 60 shafts since 2022



*Range of measurement and logging services*



*Team of geophysicists & geologists*



*Reliable data for making better decisions*





# EUROPEAN GEOPHYSICAL SERVICES

## Surveys

We are able to survey boreholes up to 2000m and from 50mm to 10m in diameter. Our ROV units can survey up to 400m from the point of entry into adits and tunnels.

## Resources

Our current capabilities includes:

- ▶ 5 Senior Geophysical Logging Engineers
- ▶ 8 Geophysical logging Engineers
- ▶ 4 Support staff
- ▶ 8 Vehicle mounted logging units, including:
  - 4 dedicated water well survey units, which are only ever used in potable water.
  - 7 with 4x4 capability
- ▶ 3 Hand portable units for remote or difficult access locations (1 dedicated to potable water surveys)
- ▶ 2 ROV Units for surveying water filled adits and tunnels
- ▶ 1 Container based logging unit
- ▶ 4 Support vehicles



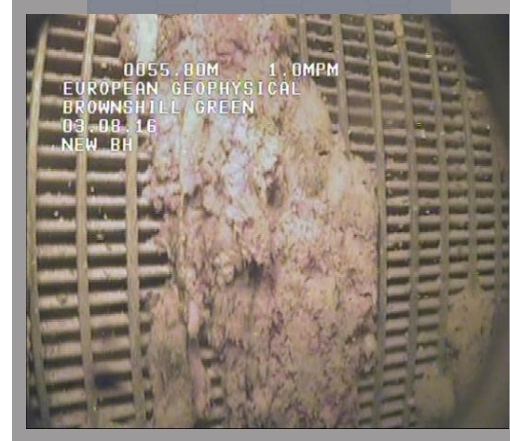
## Work with our Team

For further information on our services or to discuss your project requirements, please get in touch via the contact details below:



22 The Stables, Sansaw  
Business Park,  
Shrewsbury, SY4 4AS  
01939 210710

## CCTV Surveys



## ROV Survey

